

# AIR PUMP

## Hydraulic PA9 Series

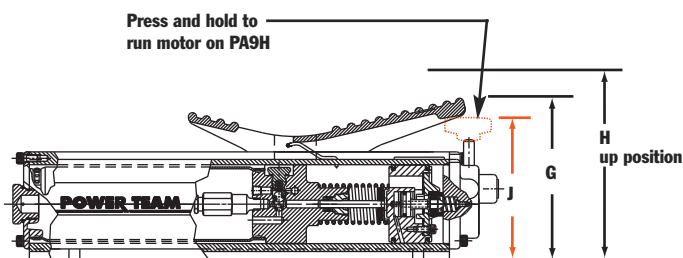
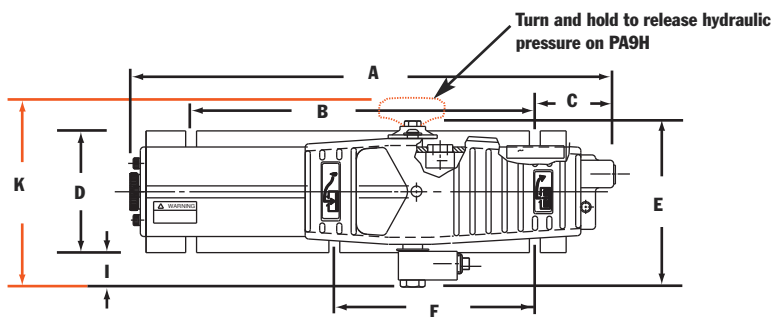
9 cu. in./min.

Single-Acting

**IDEAL FOR POWERING  
SINGLE-ACTING CYLINDERS  
AND PORTABLE  
HYDRAULIC TOOLS.**

- Easier to operate than a hand pump, giving you the speed you need at an affordable price.
- Easy and economical to service; not a “throw away” unit.
- Unique bladder design for all-position operation and storage.
- Operates on 40-120 psi shop air, at 20 cfm.
- Hard-coat anodized aluminum housing.
- Oil filler with integral safety relief minimizes chance of damage to reservoir bladder if overfilling occurs.

**PA9 Foot Control**

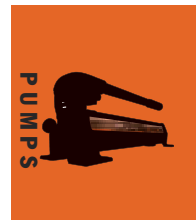


Relief valve settings: up to 10,000 psi  
Mounting holes (standard):  $\frac{3}{8}$ " slots

Pump No.	A (in.)	B (in.)	C (in.)	D (in.)	E (in.)	F (in.)	G (in.)	H (in.)	I (in.)	J (in.)	K (in.)
<b>PA9</b>	$16\frac{15}{16}$	12	$2\frac{13}{16}$	$4\frac{1}{4}$	$5\frac{5}{16}$	7	$5\frac{5}{8}$	7	$1\frac{1}{8}$	—	—
<b>PA9H</b>	$16\frac{15}{16}$	12	$2\frac{13}{16}$	$4\frac{1}{4}$	—	7	—	7	$1\frac{1}{8}$	$4\frac{13}{16}$	$6\frac{11}{16}$



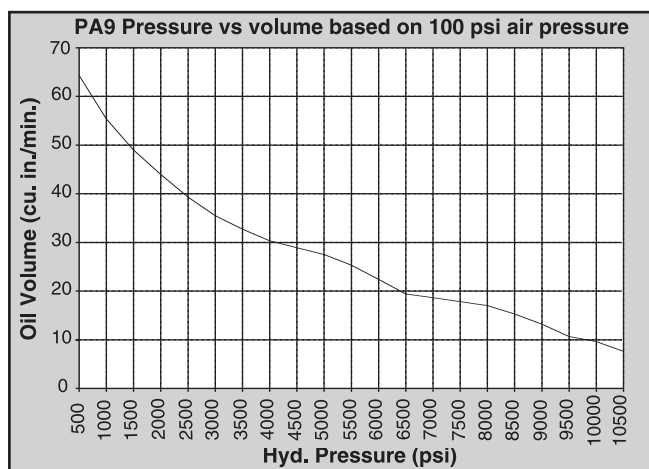
**PA9**  
Foot Control



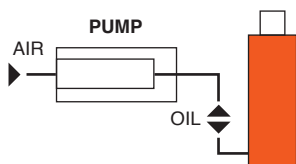
**PA9H Hand Control Pump** as used in a straightening press.



**PA9H**  
Hand Control



**Typical Set-up**  
Hook-up for single-acting cylinders



For Use with Cyl. Type	Order No.	Air Supply Req'd (psi)	Reservoir Cap. (cu. in.)	Usable (cu. in.)	Oil Port (in.)	Max. Pressure Output (psi)	Prod. Wt. (lbs.)
Single-Acting	<b>PA9</b>	40-120	35	33.5	$\frac{3}{8}$ NPTF	10,000	15
Single-Acting	<b>PA9H</b>	40-120	35	33.5	$\frac{3}{8}$ NPTF	10,000	15