

Crosby® Alloy Bolt Type Shackles

Load Rated®

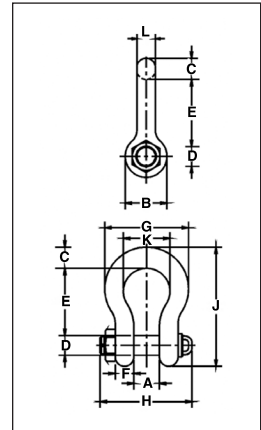


G-2140 / S-2140 ALLOY BOLT TYPE ANCHOR SHACKLES



G-2140 meets the performance requirements of Federal Specification RR-C-271E, Type IVA, Grade B, Class 3, except for those provisions required of the contractor. For additional information, see page 426.

- Quenched and Tempered.
- Alloy bows, Alloy bolts.
- Forged Alloy Steel 30 thru 175 metric tons. Cast Alloy Steel 200 thru 400 metric tons.
- Working Load Limit is permanently shown on every shackle.
- Pins are galvanized and painted red.
- All sizes are **RFID EQUIPPED**.
- Shackles are Quenched and Tempered and can meet DNV impact requirements of 42 joules (31 ft-lbs.) at -20 degree C (-4 degree F).
- All sizes are individually proof tested to 2.0 times the Working Load Limit.
- Refer to page 76 for Crosby COLD TUFF® shackles that meet the additional requirements of DNV rules for certification of lifting applications - Loose Gear.
- Shackles 200 metric tons and larger are provided as follows.
 - Serialized Pin and Bow
 - Material Certification (Chemical)
 - Magnetic Particle Inspected.
 - Certification must be requested at time of order.
- Meets or exceeds all requirements of ASME B30.26 including identification, ductility, design factor, proof load and temperature requirements. Importantly, these shackles meet other critical performance requirements including fatigue life, impact properties and material traceability, not addressed by ASME B30.26.
- Type Approval and certification in accordance with ABS 2006 Steel Vessel Rules 1-1-17.7, and ABS Guide for Certification of Cranes.
- Look for the Red Pin® . . . the mark of genuine Crosby quality.



G-2140 / S-2140 Crosby® Alloy Bolt Type Shackles

Nominal Shackle Size (in.)	Working Load Limit (t)*	Stock No.		Weight Each (lbs.)	Dimensions (in.)												Tolerance + / -	
		G-2140	S-2140		A	B	C	D	E	F	G	H	J	K	L	A	E	
1-1/2	30	1021110	1021129	18.8	2.38	3.62	1.62	1.63	5.75	1.39	6.88	7.73	10.00	3.88	1.53	.13	.25	
1-3/4	40	1021138	1021147	33.8	2.88	4.19	2.25	2.00	7.00	1.75	8.81	9.33	12.34	5.00	1.84	.13	.25	
2	55	1021156	1021165	49.9	3.25	4.81	2.40	2.25	7.75	2.00	10.16	10.41	13.68	5.75	2.08	.13	.25	
2-1/2	85	1021174	1021183	103	4.12	5.81	3.12	2.75	10.50	2.62	12.75	13.58	17.90	7.25	2.71	.25	.25	
3	120	1021192	—	162	5.00	6.50	3.63	3.25	13.00	3.00	14.62	15.13	21.50	7.88	3.12	.25	.25	
3-1/2	† 150	1021218	—	268	5.25	8.00	4.38	3.75	14.63	3.75	17.02	17.62	24.88	9.00	3.62	.25	.25	
4	† 175	1021236	—	332	5.50	9.00	4.56	4.25	14.50	4.00	18.00	20.37	25.68	10.00	4.00	.25	.25	
4-3/4**	† 200	1021414	—	455	7.25	10.50	6.00	4.75	15.63	3.75	21.00	21.21	29.25	11.00	4.50	.25	.25	
5**	† 250	1021432	—	650	8.50	12.00	6.50	5.00	20.00	3.88	24.50	22.68	35.00	13.00	4.50	.25	.25	
6	† 300	1021450	—	780	8.38	12.00	6.57	6.00	19.50	4.75	25.00	25.06	35.25	13.00	5.00	.25	.25	
7**	† 400	1021478	—	1200	8.25	14.00	7.25	7.00	22.50	6.50	26.00	28.68	40.25	13.00	6.00	.25	.25	

* Note: Maximum Proof Load is 2.0 times the Working Load Limit. Minimum Ultimate Load is 4 times the Working Load Limit on 200 thru 400 metric Tons. For sizes 30 thru 175 metric Tons, Minimum Ultimate Load is 5.4 times the Working Load Limit.

** Cast Alloy Steel.

† Furnished with Round Head Bolts with an eyebolt for handling

For Working Load Limit reduction due to side loading applications, see page 80.